

Addressable Multi Channel Interface

DI-9309

Description

With microprocessor, DI-9309 Addressable Multi-Channel Interface can communicate with fire alarm control panel (FACP), monitor power supply, and judge the logic state of input signal, control output and state indicators.

Each output channel occupies an individual address and receives start command from FACP, energizes the related relay, gives dry contact output and lights the related action indicator. Each input is corresponded to an address to receive the state signal from the equipment and transmit it to FACP. The quantity of channels can be set by jumpers

Electronic addressing can be done through Handheld Programming tool (P-9910), purchased separately.

Features and Benefits

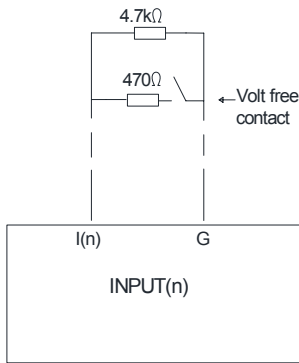
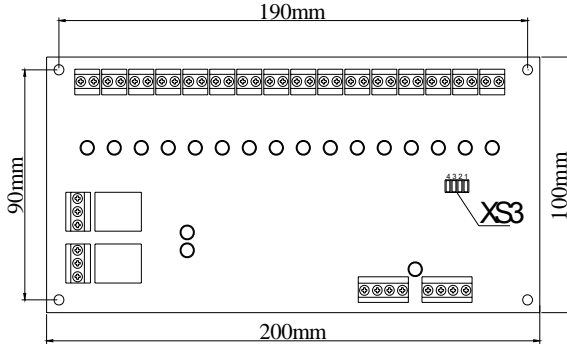
- Providing Max. 16 channels of independent input. 1-16 selectable. Input signals are insulated from the loop.
- Providing two channels of independent dry contact output.
- 3-18 consecutive addresses, changing with selected channel quantity.
- Power supply monitored.
- Cable monitored for open circuit and short circuit

Technical Specifications

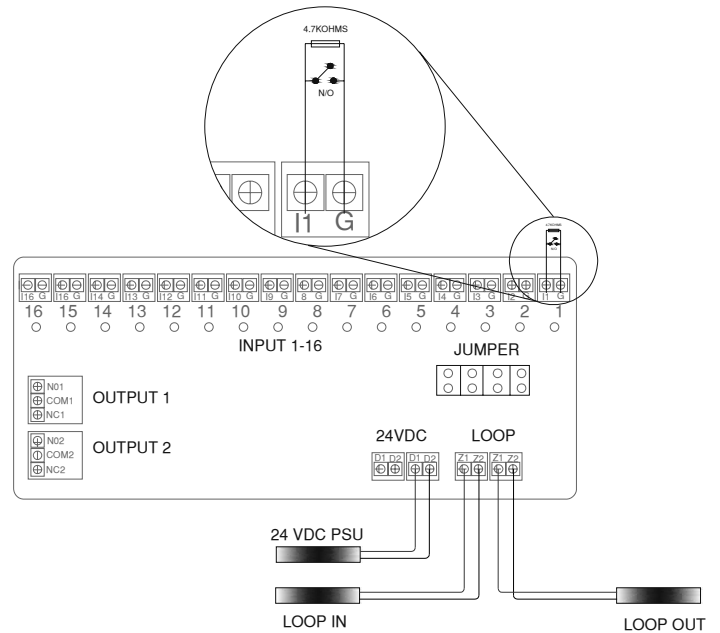
- Operating Voltage Loop voltage: 24V (16V~28V). Power Supply Voltage: 24VDC (20VDC~28VDC).
- Standby Current Loop $\leq 1.5\text{mA}$ Power $\leq 50\text{mA}$
- Action Current Loop $\leq 3\text{mA}$ Power $\leq 100\text{mA}$
- Output Capacity Output contact capacity: 220V/2A.
- Output Type Dry contact output.
- Programming Method Electronically programming.
- Code Range Occupying 3-18 addresses, the output address of Channel 1 can be set within 1~225. The output address of Channel 2 is automatically increased 1 to Channel 1. The input address of Channel n is automatically increased n and 1 to Channel 1.
- Action Indicators Red. Separate polling indicator HL0. Individual state LED(n) for each channel input. Flashes in fault state. Illuminates in action state. Quiet in normal supervisory. HL1 and HL2 for each channel output. Illuminates when activated.
- Ambient Temperature $-10^{\circ}\text{C}+50^{\circ}\text{C}$
- Relative Humidity $\leq 95\%$, non condensing
- Mounting Hole Distance 190mm \times 90mm
- Dimensions (L \times W \times H) 200mm \times 100mm \times 20mm
- Weight About 240g

Mounting Isolator Base

The module should be installed in compliance with all local codes and/or NFPA 72 National Fire Alarm Code, NFPA 70 National Electrical Code, BS5389, and EN45. It is installed onto an electrical box (not included).



INPUT CHANNEL SETTING				
Pin \ Channel QTY.	4	3	2	1
1	OFF	OFF	OFF	OFF
2	OFF	OFF	OFF	ON
3	OFF	OFF	ON	OFF
4	OFF	OFF	ON	ON
5	OFF	ON	OFF	OFF
6	OFF	ON	OFF	ON
7	OFF	ON	ON	OFF
8	OFF	ON	ON	ON
9	ON	OFF	OFF	OFF
10	ON	OFF	OFF	ON
11	ON	OFF	ON	OFF
12	ON	OFF	ON	ON
13	ON	ON	OFF	OFF
14	ON	ON	OFF	ON
15	ON	ON	ON	OFF
16	ON	ON	ON	ON



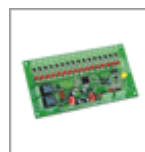
Programming

DI-9309 interface can be addressed in field with power off by using P-9910B programmer connected to Z1 and Z2. Please refer to P-9910B Hand Held Programmer Installation and Operation Manual for details.

Selection of compatible Control Panels

Compatible with all GST Intelligent Fire Alarm Panels GST200-2, GST5000, GSTIFP8.

Ordering Information



Part Number: DI-9309
Description: Addressable Multi channel interface
Weight / Kg.: 0.180
Pack Qty. per Box: 80

